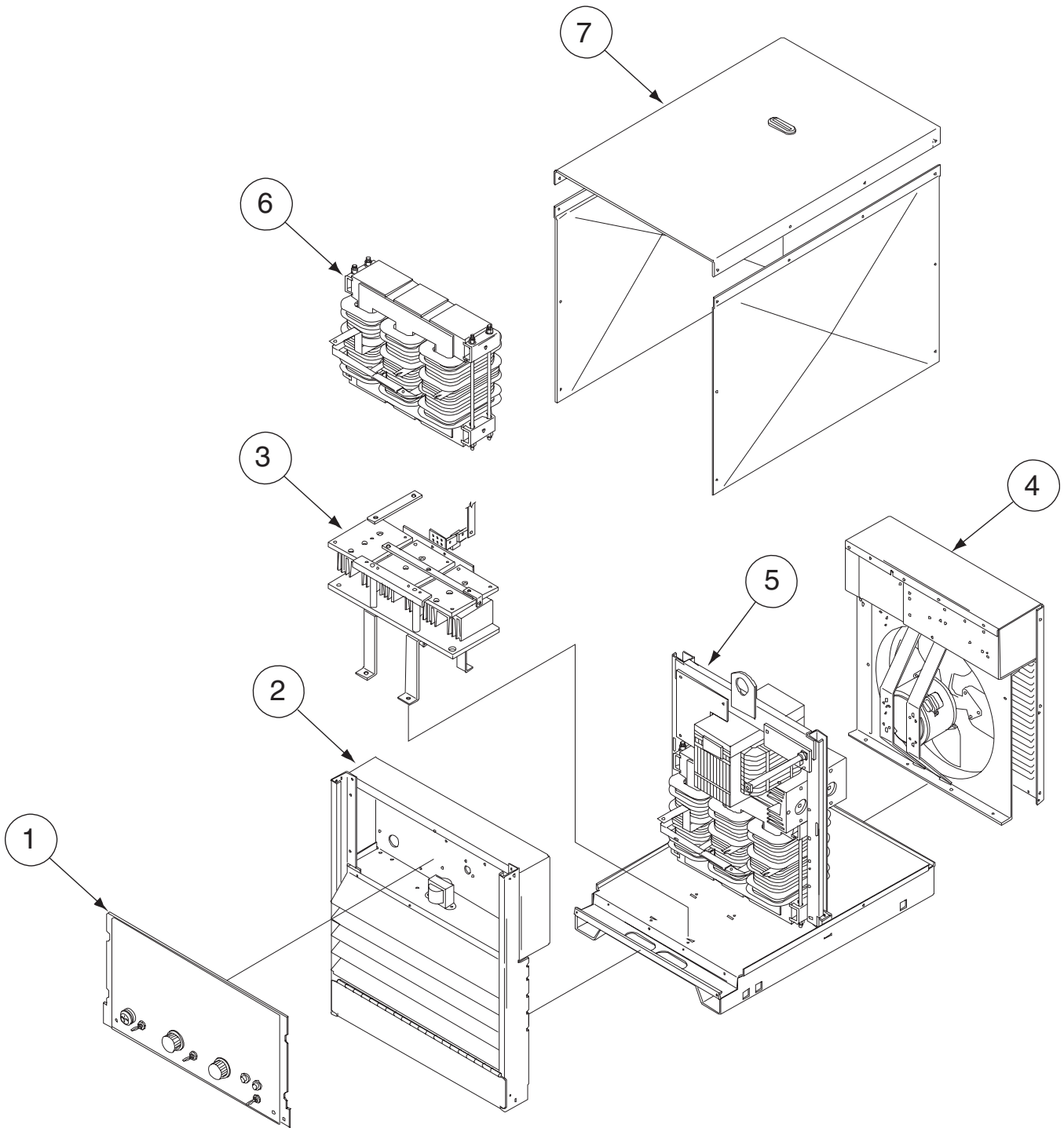


PARTS LIST FOR
RED-D-ARC
E-500

ILLUSTRATION OF SUB-ASSEMBLIES



RED-D-ARC E-500

For Codes: 9887SST, 10649SPL1, 10649 & 11042

Do Not use this Parts List for a machine if its code number is not listed. Contact the Service Department for any code numbers not listed.

Use the Illustration of Sub-Assemblies page and the table below to determine which sub assembly page and column the desired part is located on for your particular code machine.

Sub Assembly Item No. ↔			1	2	3	4	5	6	7
SUB ASSEMBLY PAGE NAME ↔	Optional Equipment	Miscellaneous Items	Control Panel Assembly	Case Front Assembly	3 Phase Bridge Assembly	Input Box & Fan Assembly	Center Assembly	Transformer Assembly	Cover Assembly
PAGE NO. ↔	P353-B.1	P353-B.2	P353-C	P353-D	P353-E	P353-F	P353-G	P353-H	P353-J
CODE NO. ↓									
10649 (230/460/575)		1	1	1	1	1	1	1	1
9887SST (230/460/575)		1	3	2	1	1	2	1	1
10649SPL1 (230/460/575)		1	2	3	3	1	1	2	2
11042 (230/460/575)		1	4	4	2	1	3	3	3

RED-D-ARC E-500

For Codes: 9887SST, 10649SPL1, 10649 & 11042

Do Not use this Parts List for a machine if its code number is not listed. Contact the Service Department for any code numbers not listed.

Use the Illustration of Sub-Assemblies page and the table below to determine which sub assembly page and column the desired part is located on for your particular code machine.

Sub Assembly Item No. SUB ASSEMBLY PAGE NAME									
Foot Amptrol (K870)	Hand Amptrol								
PAGE NO.									
CODE NO.									
10649 (230/460/575)									
9887SST (230/460/575)	See P-66-J	See P-66-K							
10649SPL1 (230/460/575)	See P-66-J	See P-66-K							
11042 (230/460/575)									

NOTES

E500

Red-D-Arc

OPTIONAL EQUIPMENT LISTING

Miscellaneous Options Available for your machine are listed below:

Indicates a change this printing.

DESCRIPTION	PART NUMBER
-------------------	-------------

Undercarriage (Polyolefin Wheel) (R3R 300, 400 & 500)	Order K817-P
---	--------------

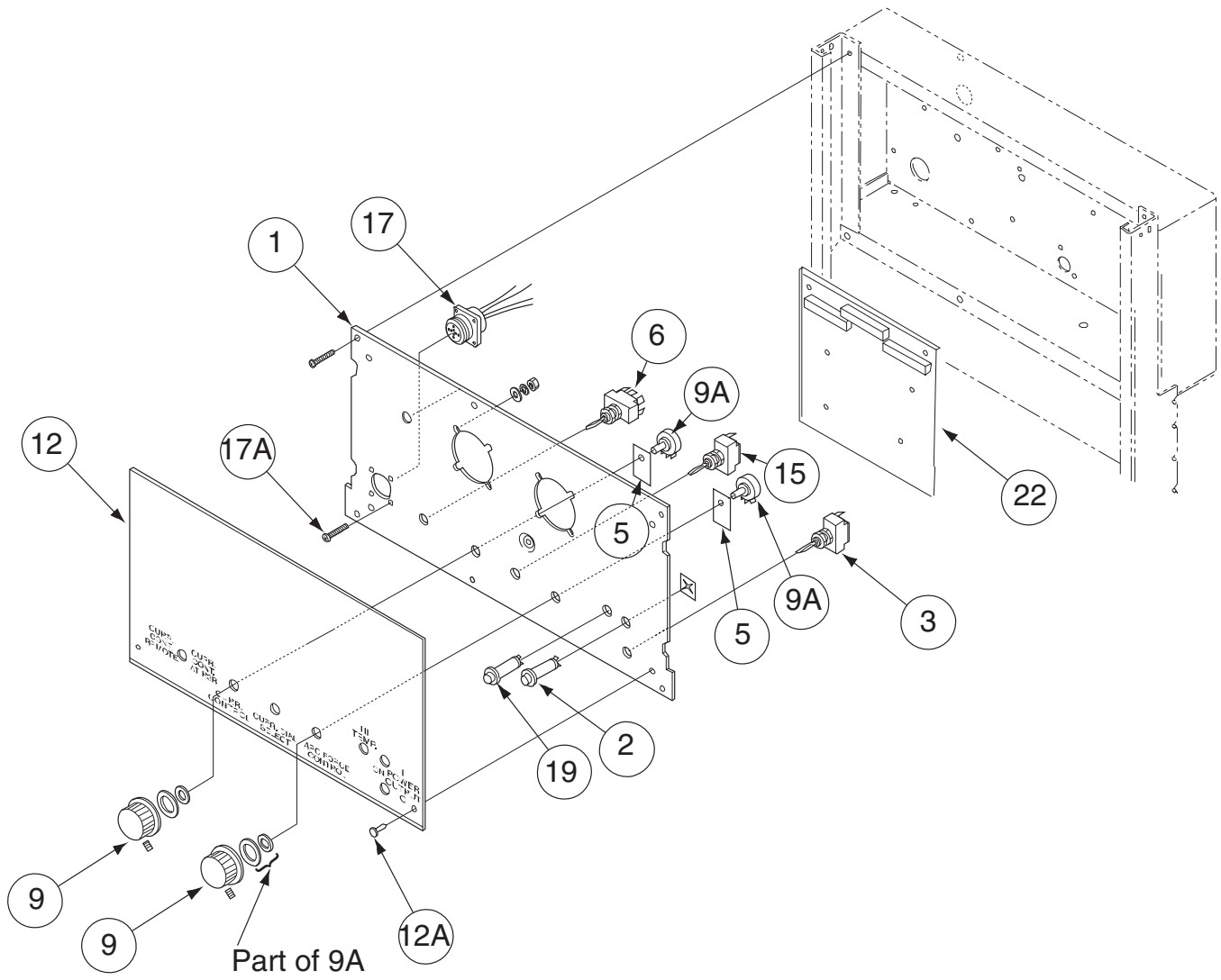
MISCELLANEOUS ITEMS
(THESE ITEMS ARE NOT ILLUSTRATED)

Indicates a change this printing.

Use only the parts marked "x" in the column under the heading number called for in the model index page.

DESCRIPTION	PART NO.	QTY.	1	2	3	4	5	6	7	8	9
Plug & Lead Assembly (J4)	S18250-147	1	X								
Plug & Lead Assembly (J1)	S18250-150	1	X								
Grommet Strip	T12823-15	1	X								
Connection Diagram	M15666-1	1	X								

Control Panel Assembly



Indicates a change this printing.

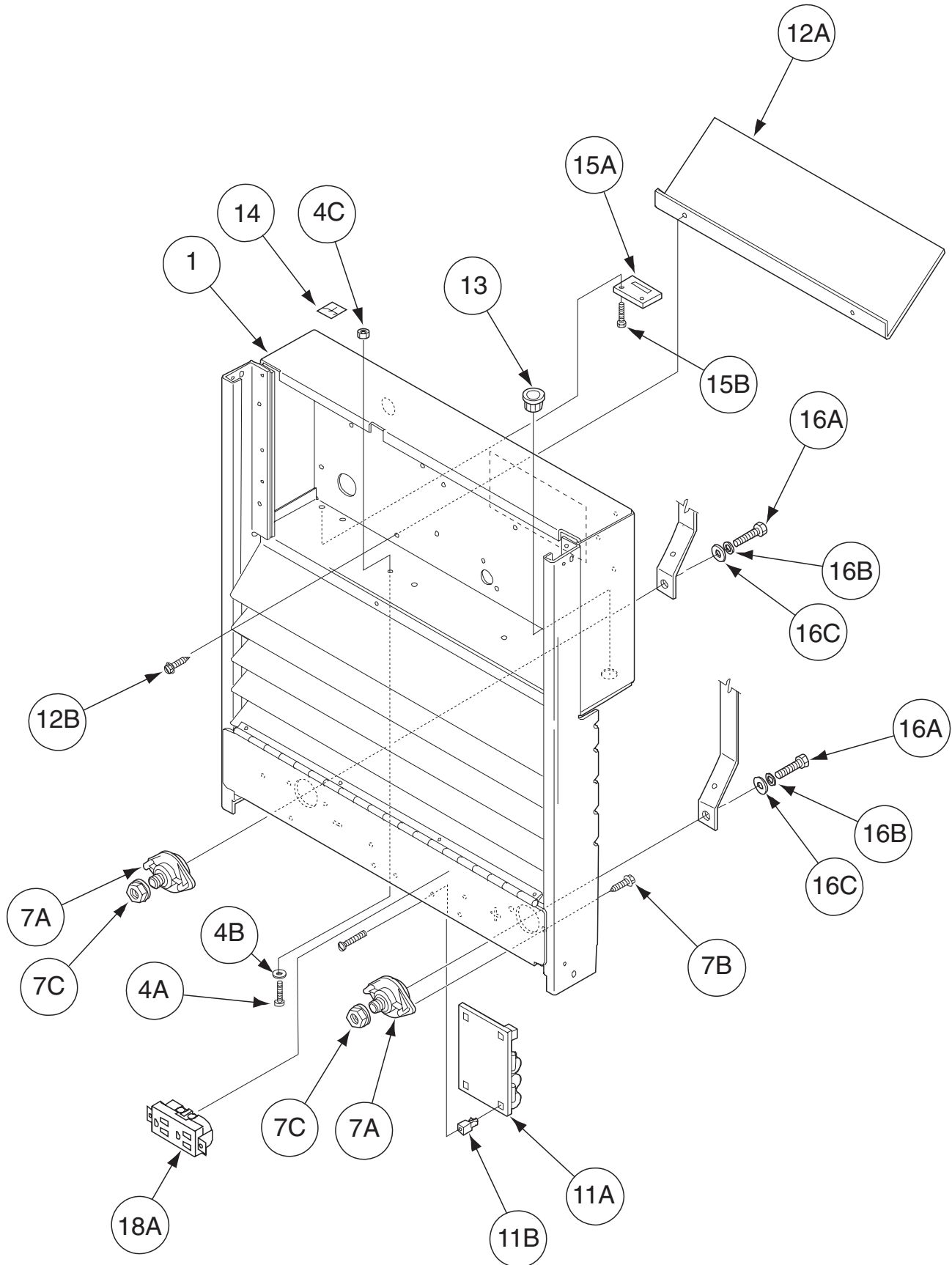
Use only the parts marked "x" in the column under the heading number called for in the model index page.

ITEM	DESCRIPTION	PART NO.	QTY.	1	2	3	4	5	6	7	8	9
1	Control Box Cover	M16045-1	1	X	X	•	X					
1	Control Box Cover	M16045	1	•	•	X	•					
2	Pilot Light	T13486-1	1	X	X	X	X					
3	Power Switch (SW1)	T10800-4	1	X	X	X	X					
5	Insulation	T12792-1	2	X	X	X	X					
6	Remote Switch (SW2)	T10800-39	1	X	X	X	X					
9	Knob	T10491	2	X	X	X	X					
9A	Potentiometer	T10812-40	2	X	X	X	X					
12	Nameplate (500 Amp Standard)	L11073	1	X	X	•	•					
12	Nameplate	L11073-1	1	•	•	•	X					
12	Nameplate	NA		•	•	X	•					
12A	Fastener Buttons	T14659-1	4	X	X	X	X					
15	Current Range Switch	T13562	1	X	X	X	X					
17	Amphenol Connector	S13100-236	1	X	X	•	X					
17	Amphenol Connector	S13100-115	1	•	•	X	•					
17A	Self Tapping Screw	S8025-96	4	X	X	X	X					
18	Amphenol Connector Cap (Not Shown)	S17062-6	1	X	X	•	X					
18	Amphenol Connector Cap (Not Shown)	S17062-2	1	•	•	X	•					
19	Pilot Light (High Temperature)	T13486-2	1	X	X	X	X					
22	Control P.C. Board	G2206-[]	1	X	X	X	X					
22B	Expansion Nut (Not Shown)	S14020-3	7	X	X	X	X					
22C	Self Tapping Screw (Not Shown)	S8025-97	7	X	X	X	X					

Note: When ordering new printed circuit boards indicate the dash number [] of the "Old" board that is to be replaced. This will aid Lincoln in supplying the correct and latest board along with any necessary jumpers or adapters. The dash number brackets [] have purposely been left blank so as to eliminate errors, confusion and updates.

NA - Not Available

Case Front Assembly



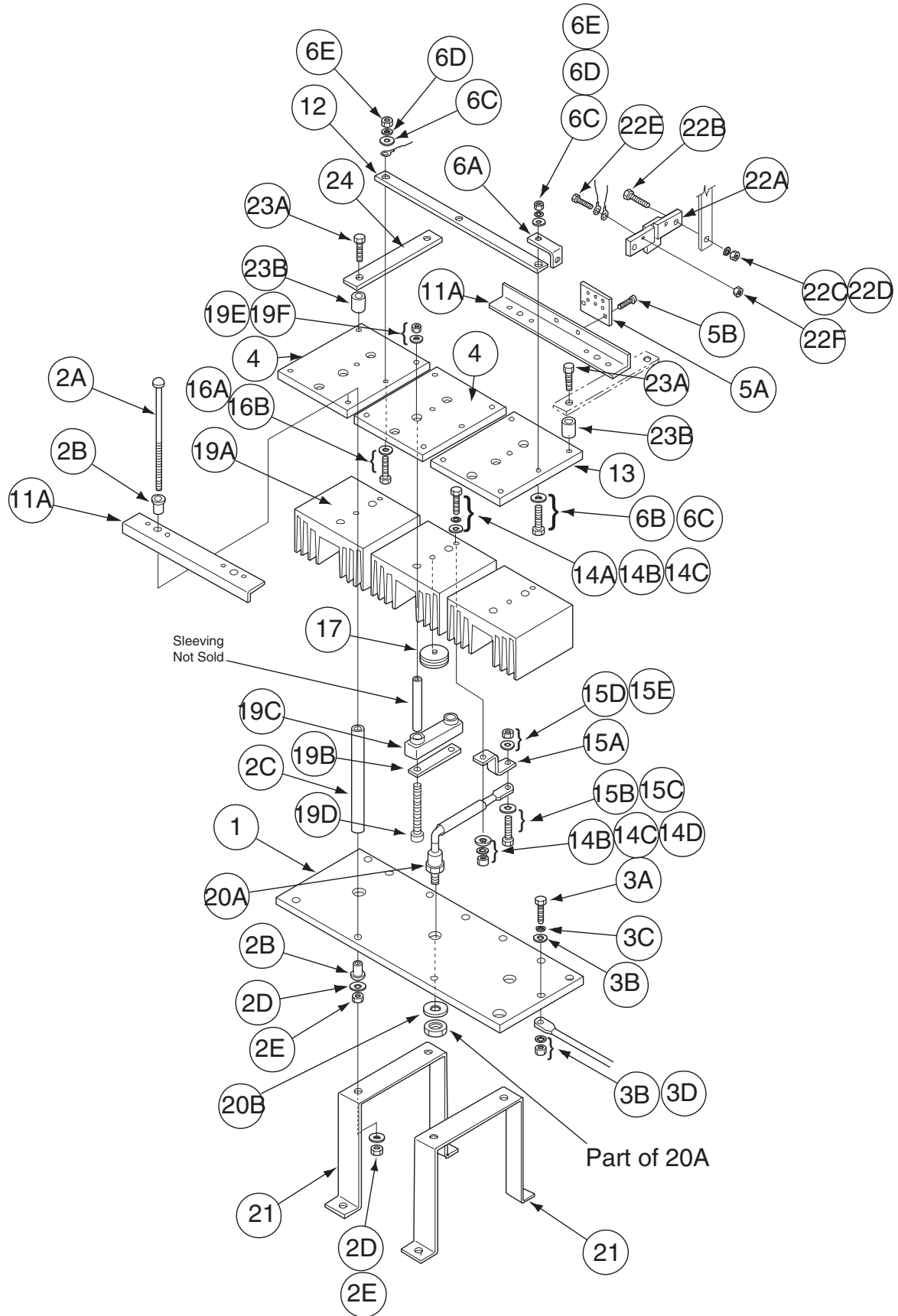
Indicates a change this printing.

Use only the parts marked "x" in the column under the heading number called for in the model index page.

ITEM	DESCRIPTION	PART NO.	QTY.	1	2	3	4	5	6	7	8	9
1	Front Support, Louvers, & Control Box	L7521-6	1	X	•	•	•					
1	Front Support, Louvers, & Control Box	L7521-1	1	•	X	•	•					
1	Front Support, Louvers, & Control Box	N/A	1	•	•	X	•					
1	Front Support, Louvers, & Control Box	L7521-14	1	•	•	•	X					
4A	Thread Forming Screw	S9225-36	1	X	X	X	X					
4B	Lock Washer	T9695-1	1	X	X	X	X					
4C	#10-24 Hex Nut	CF000010	1	X	X	X	X					
7A	Output Terminal Assembly	T14166-9	2	X	X	X	X					
7B	Self Tapping Screw	S8025-91	4	X	X	X	X					
7C	Nut	T3960	2	X	X	X	X					
11A	P.C. Board Snubber	M15370-[]	1	X	X	X	X					
11B	Self tapping Screw	S8025-97	4	X	X	X	X					
12A	Air Deflector	S17113	1	X	X	X	X					
12B	Self Tapping Screw	S24739-1	2	X	X	X	X					
13	Bushing	T14614-1	1	X	X	X	X					
14	Ground Decal	T13260-4	1	X	X	X	X					
15A	Lead Insulating Panel (W/O Pocket Amptrol)	S14585-2	1	X	X	X	X					
15B	Self Tapping Screw	S8025-5	2	X	X	X	X					
16A	1/2-13 x .750 Hex Head Cap Screw	CF000020	2	X	X	X	X					
16B	Lock Washer	E106A-15	2	X	X	X	X					
16C	Plain Washer	S9262-1	2	X	X	X	X					
17	Caution Decal (Not Shown)	S13504	1	X	X	X	X					
18A	Receptacle	S20467-1	1	•	•	•	X					
18B	Thread Forming Screw (Not Shown)	S9225-63	2	•	•	•	X					
18C	#10-24 Speed Nut (Not Shown)	T11525-1	2	•	•	•	X					
18D	Receptacle Gasket (Not Shown)	S21088	1	•	•	•	X					
18E	Receptacle Cover (Not Shown)	M16996	1	•	•	•	X					

Note: When ordering new printed circuit boards indicate the dash number [] of the "Old" board that is to be replaced. This will aid Lincoln in supplying the correct and latest board along with any necessary jumpers or adapters. The dash number brackets [] have purposely been left blank so as to eliminate errors, confusion and updates.

3 Phase Bridge Assembly



Indicates a change this printing.

Use only the parts marked "x" in the column under the heading number called for in the model index page.

ITEM	DESCRIPTION	PART NO.	QTY.	1	2	3	4	5	6	7	8	9
	3 Phase Bridge Assembly, Includes:(Item 1 thru 20B) (400 & 500, 500-I & 600-I)	L8459	1	X	X							
1	Heat Sink (DC Negative)	L5824	1	X	X							
2A	Carriage Bolt	T11827-31	4	X	X							
2B	Insulating Bushing	S16860	8	X	X							
2C	Insulating Tube	T7028-170	4	X	X							
2D	Plain Washer	S9262-98	4	X	X							
2E	1/4-20 Hex Nut	CF000017	4	X	X							
3A	5/16-18 x 1.00 Hex Head Cap Screw	CF000062	1	X	X							
3B	Plain Washer	S9262-30	2	X	X							
3C	Lock Washer	E106A-14	1	X	X							
3D	5/16-18 Hex Nut	CF000029	1	X	X							
4	Cathode Heat Sink	M13432-2	2	X	X							
5A	Terminal Plate	T14211	1	X	X							
5B	Self Tapping Screw	S8025-62	2	X	X							
6A	Shunt Strap	S11109-6	1	X	X							
6B	5/16-18 x 1.25 Hex Head Cap Screw	CF000028	1	X	X							
6C	Plain Washer	S9262-30	2	X	X							
6D	Lock Washer	E106A-14	1	X	X							
6E	5/16-18 Hex Nut	CF000029	1	X	X							
11A	Support Bracket	M13430	2	X	X							
11B	Thread Cutting Screw (Not Shown)	S9225-26	8	X	X							
12	Positive Heat Sink Lead	T9706-30	1	X	X							
13	Cathode Heat Sink	M13432-3	1	X	X							
14A	5/16-18 x 1.25 Hex Head Cap Screw	CF000028	3	X	X							
14B	Plain Washer	S9262-30	6	X	X							
14C	Lock Washer	E106A-14	3	X	X							
14D	5/16-18 Hex Nut	CF000029	3	X	X							
15A	Rectifier Jumper Lead	S19591	3	X	X							
15B	5/16-18 x 1.25 Hex Head Cap Screw	CF000028	3	X	X							
15C	Plain Washer	S9262-121	3	X	X							
15D	Lock Washer	E106A-14	3	X	X							
15E	5/16-18 Hex Nut	CF000029	3	X	X							
16A	5/16-18 x 1.00 Hex Head Cap Screw	CF000062	2	X	X							
16B	Plain Washer	S9262-30	4	X	X							
16C	Lock Washer	E106A-14	2	X	X							
16D	5/16-18 Hex Nut	CF000029	2	X	X							
17	SCR	M12283-3	3	X	X							
18A	5/16-18 x 1.25 Hex Head Cap Screw (Not Shown)	CF000028	1	X	X							
18B	Plain Washer (Not Shown)	S9262-30	2	X	X							
18C	Lock Washer (Not Shown)	E106A-14	1	X	X							
18D	5/16-18 Hex Nut (Not Shown)	CF000029	1	X	X							
19A	Heat Sink	M12314-3	3	X	•							
19A	Heat Sink	M12314	3	•	X							
19B	SCR Spring	S14724-A	3	X	X							
19C	SCR Clamp	S14724-B	3	X	X							
19D	Socket Head Cap Screw	T9447-44	6	X	X							
19E	Plain Washer	S9262-98	6	X	X							
19F	1/4-20 Hex Nut	CF000017	6	X	X							

Indicates a change this printing.

Use only the parts marked "x" in the column under the heading number called for in the model index page.

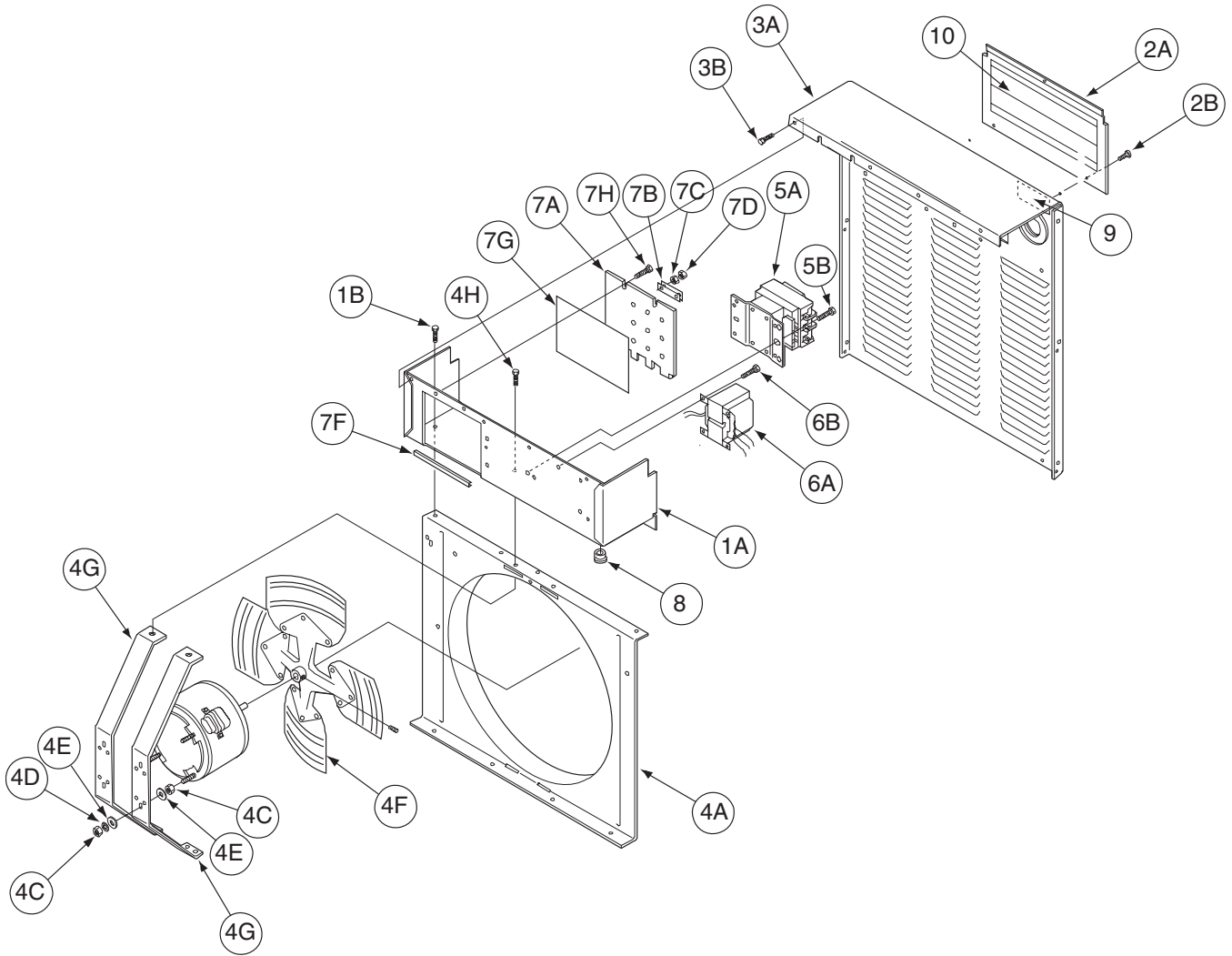
ITEM	DESCRIPTION	PART NO.	QTY.	1	2	3	4	5	6	7	8	9
20A	Rectifier Diode	M9661-31	4	X	X							
20B	Spring Washer	T12735	4	X	X							
21	Bridge Mounting Bracket	M16063	2	X	•							
21	Bridge Mounting Bracket	M20175	2	•	X							
22A	Shunt	S6602-20	1	X	•							
22A	Shunt	S6602-25	1	•	X							
22B	3/8-16 x 1.00 Hex Head Cap Screw	CF000019	1	X	X							
22C	Lock Washer	E106A-16	1	X	X							
22D	3/8-16 Hex Nut	CF000067	1	X	X							
22E	Sems Screw	T10082-4	2	X	X							
22F	#10-24 Hex Nut	CF000010	2	X	X							
23A	Thread Forming Screw	S9225-47	2	X	X							
23B	Spacer	T7028-113	2	X	X							
24	Brace	T8477-35	2	X	X							

NOTES

E500

Red-D-Arc

Input Box & Fan Assembly

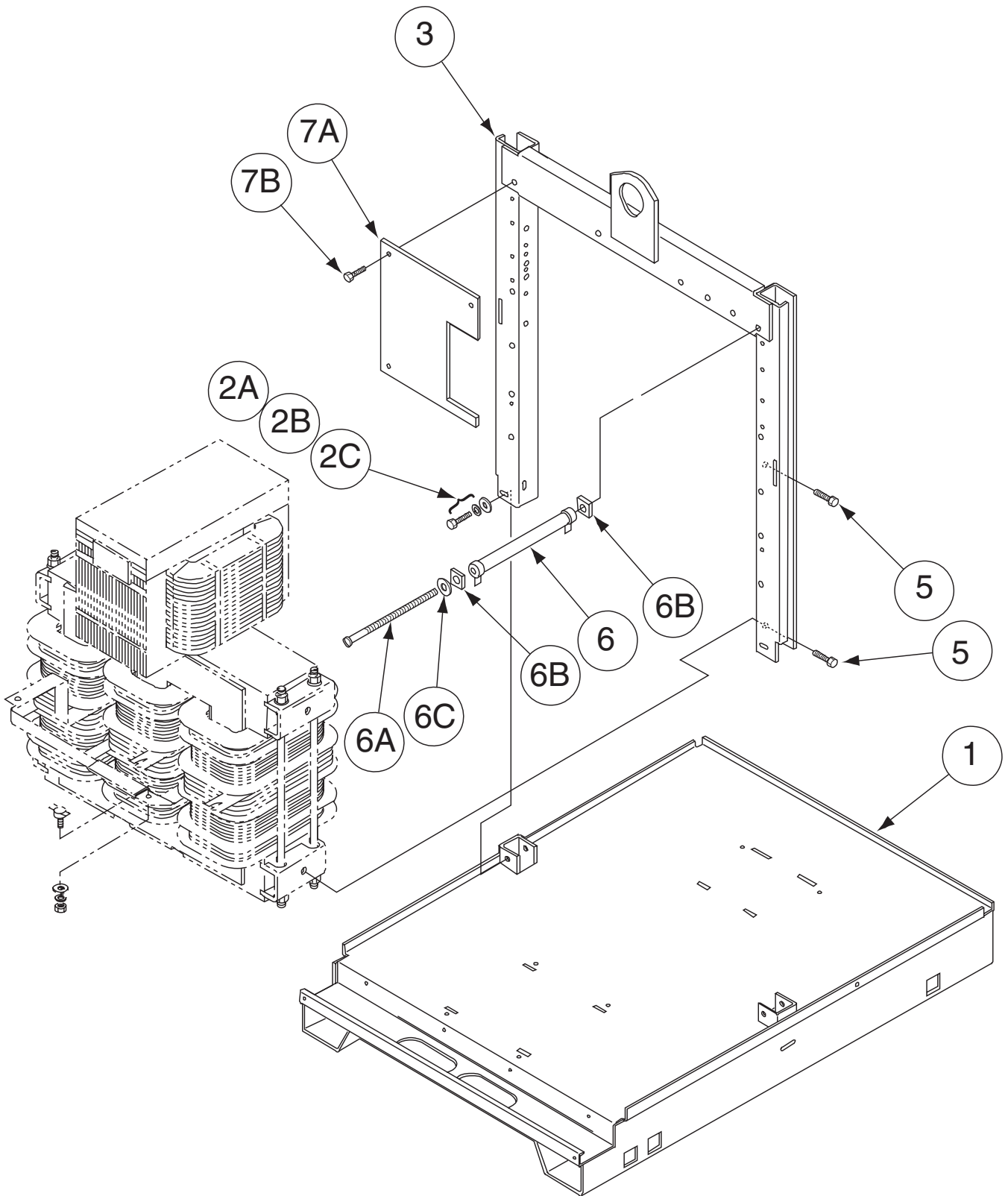


Indicates a change this printing.

Use only the parts marked "x" in the column under the heading number called for in the model index page.

ITEM	DESCRIPTION	PART NO.	QTY.	1	2	3	4	5	6	7	8	9
1A	Input Box Assembly	S17978	1	X								
1B	Self Tapping Screw	S8025-91	3	X								
2A	Input Access Door	M13998-4	1	X								
2B	Self Tapping Screw	S8025-91	3	X								
3A	Rear Panel	S16816-11	1	X								
3B	Self Tapping Screw	S8025-91	12	X								
4	Fan Baffle Assembly, Includes:	M16526-1	1	X								
4A	Fan Baffle	L6247 0	1	X								
4B	Fan Motor	M9983-6	1	X								
4C	#10-32, or 8-32 Hex Nut	CF000011 or CF000042	As Req'd	X								
4D	Lock Washer	T9695-1	As Req'd	X								
4E	Plain Washer	S9262-67	8	X								
4F	Fan	M6819-7	1	X								
4G	Fan Motor Mounting Bracket (Above Code 9800)	M16525	1	X								
4H	Self Tapping Screw	S8025-91	4	X								
5A	Contactors	M18712	1	X								
5B	Self Tapping Screw	S8025-91	3	X								
6A	Control Transformer	M12390-67	1	X								
6B	Self Tapping Screw	S8025-91	3	X								
7	Input Reconnect Panel Assembly, Includes:	L7219-6	1	X								
7A	Reconnect Panel	M15002-3	1	X								
7F	Grommet Strip	T12823-13	1	X								
7G	E2521/1-.010-5.13-7.20 Insulation	CI000620	1	X								
8	Bushing	T12380-2	1	X								
9	Ground Decal	T13259	1	X								
10	Connection Diagram (230/460/575 Volt)	M15666	1	X								

Center Assembly

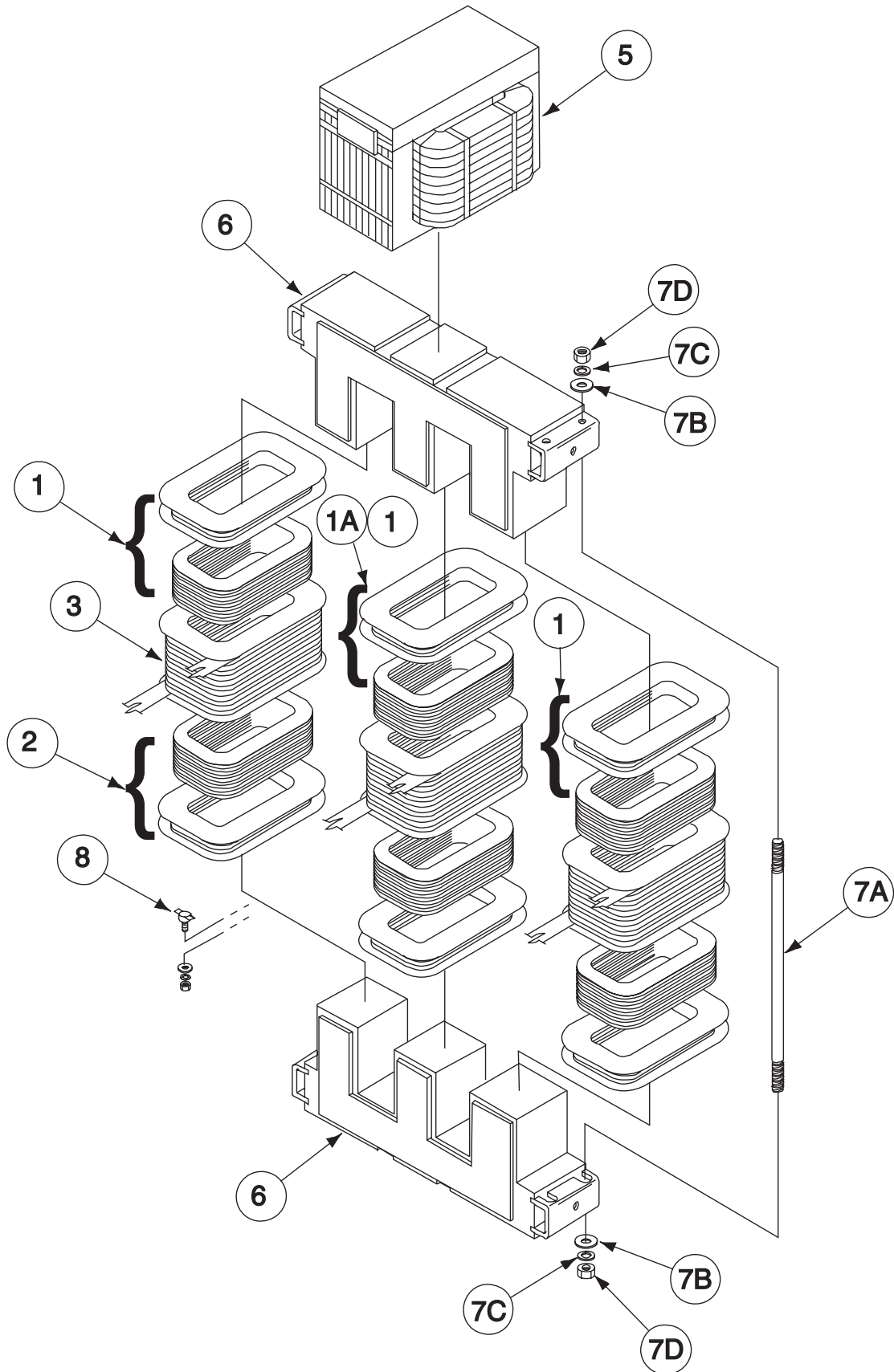


Indicates a change this printing.

Use only the parts marked "x" in the column under the heading number called for in the model index page.

ITEM	DESCRIPTION	PART NO.	QTY.	1	2	3	4	5	6	7	8	9
1	Base Welded Assembly	L6494-2	1	X	•	X						
1	Base Welded Assembly	L6494-1	1	•	X	•						
2A	3/8-16 x .75 Hex Head Cap Screw	CF000034	4	X	X	X						
2B	Lock Washer	E106A-4	4	X	X	X						
2C	Plain Washer	S9262-120	4	X	X	X						
3	Lift Bale Assembly	L6485	1	X	X	X						
5	Thread forming Screw	S9225-28	4	X	X	X						
6	Resistor	S10404-45	2	X	•	•						
6	Resistor	T12300-49	1	•	X	X						
6A	#10-24 x 7.50 Round Head Screw	CF000191	2	X	X	X						
6B	Insulating Washer	T4479-A	4	X	X	X						
6C	Plain Washer	S9262-27	2	X	X	X						
6D	Lock Washer (Not Shown)	E106A-1	2	X	X	X						
6E	#10-24 Hex Nut (Not Shown)	CF000010	2	X	X	X						
7A	Choke Baffle (Left & Right)	S17111-1	2	X	X	•						
7A	Choke Baffle (Left)	S17111-1	1	•	•	X						
7B	Thread Forming Screw	S9225-8	3	X	X	X						
8A	Choke Baffle (Right)	S17112-1	1	•	•	X						
8B	Thread Forming Screw (Not Shown)	S9225-8	1	•	•	X						

Transformer Assembly

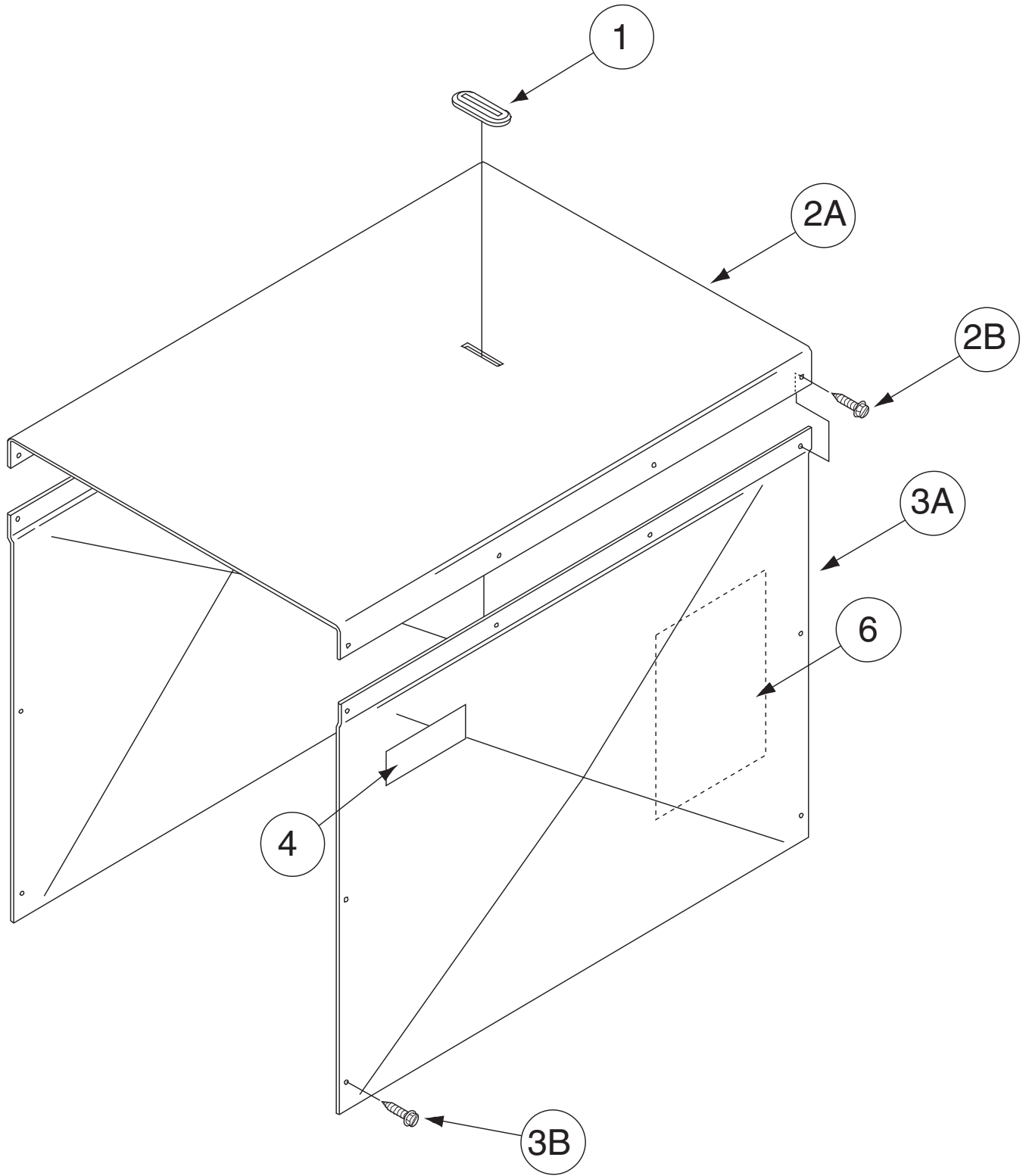


Indicates a change this printing.

Use only the parts marked "x" in the column under the heading number called for in the model index page.

ITEM	DESCRIPTION	PART NO.	QTY.	1	2	3	4	5	6	7	8	9
	Transformer Assembly, Includes:	G2711-8/9887	1	X	•	•						
	Transformer Assembly, Includes:	G2711-12	1	•	X	•						
	Transformer Assembly, Includes:	G2711-14	1	•	•	X						
1	Primary Coils (Top)	L9093-7/9887	3	X	X	•						
1	Primary Coils (Top)	L9093-17	2	•	•	X						
1A	Primary Coils (Top)	L9093-16	1	•	•	X						
2	Primary Coils (Bottom)	L9093-5/9887	3	X	•	•						
2	Primary Coils (Bottom)	L9093-9/10858	3	•	X	•						
2	Primary Coils (Bottom)	L9093-15	3	•	•	X						
3	Secondary Coils	M14168-5	3	X	X	•						
5	Choke Coil	M14217-2	1	X	X	X						
6	Lamination Assembly	L6268-4	2	X	X	X						
7A	Stud	T9781-51	4	X	X	X						
7B	Plain Washer	S9262-120	4	X	X	X						
7C	Lock Washer	T9860-4	4	X	X	X						
7D	3/8-16 Hex Nut	CF000315	8	X	X	X						
8	Secondary Thermostat	T13359-2	1	X	X	X						
9	Cooling Fan Control Thermostat (Not Shown)	T14542-2	1	X	X	X						

Covers Assembly



Indicates a change this printing.

Use only the parts marked "x" in the column under the heading number called for in the model index page.

ITEM	DESCRIPTION	PART NO.	QTY.	1	2	3	4	5	6	7	8	9
1	Cover Seal	S12934	1	X	X	X						
2A	Roof	M12352-22	1	X	X	•						
2A	Roof	L6373-5	1	•	•	X						
2B	Self Tapping Screw	S24739-1	2	X	X	X						
3A	Side Panel	M14065-12	2	X	X	X						
3B	Self Tapping Screw	S24739-1	18	X	X	X						
4	Warning Decal	M16196	1	X	X	X						
6	Wiring Diagram	L8184-1	1	X	X	•						
6	Wiring Diagram	L11467	1	•	X	X						

NOTES

E500

Red-D-Arc