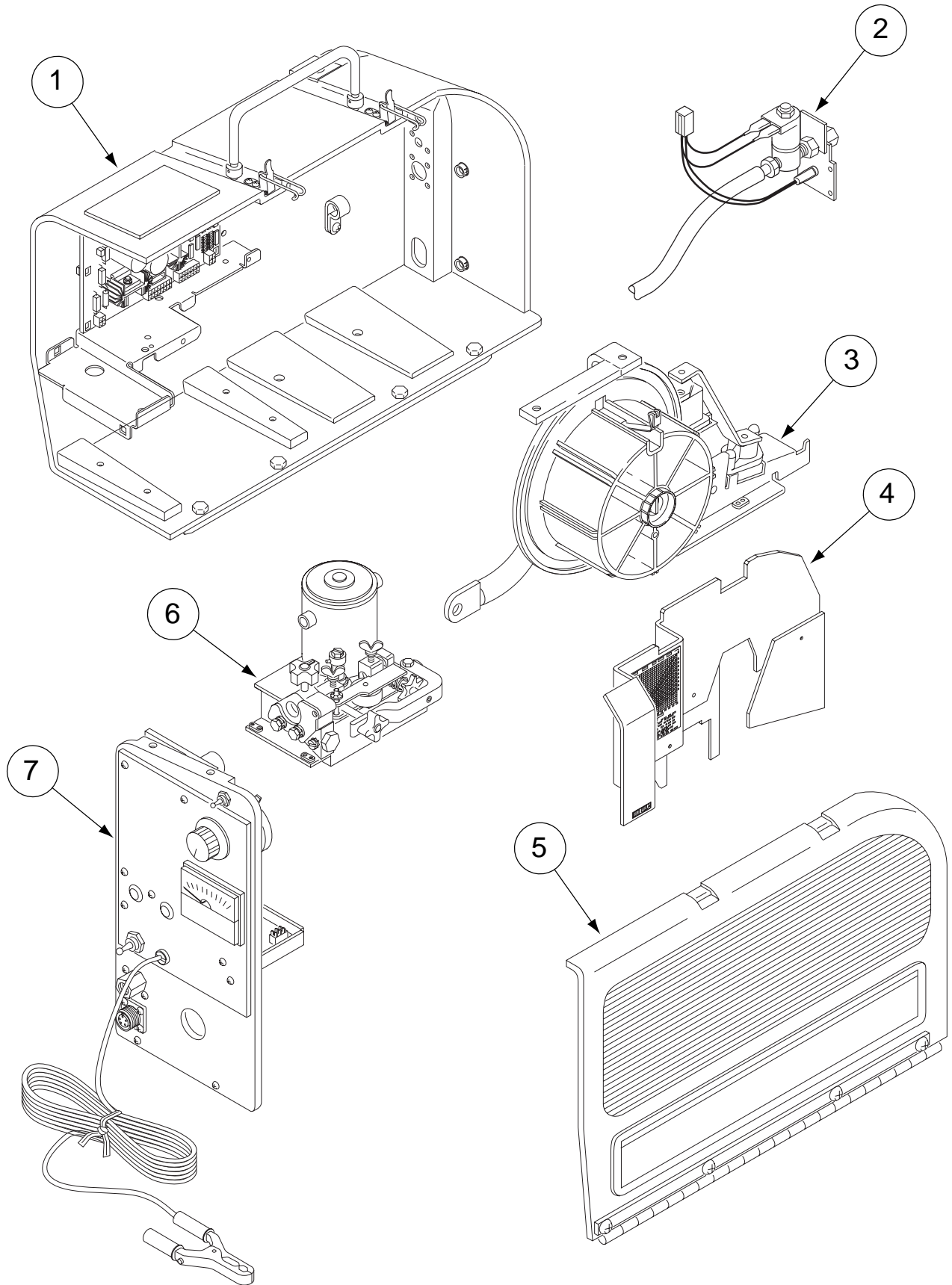


PARTS LIST FOR LN-25

LN-25



ILLUSTRATION OF SUB-ASSEMBLIES



NOTES

LN-25



OPTIONAL EQUIPMENT LISTING

Miscellaneous Options Available for your machine are listed below:

Indicates a change this printing.

DESCRIPTIONPART NUMBER
* Gas Solenoid Kit (for K428 LN-25 Only)	Order K430-2
Gas Flow Timer Kit	Order K434-1
Remote Output Control Kit	Order K431-1
115 VAC Power Source Remote Box	Order K433
Remote Control Cable Assembly	Order K432
Remote Extension Cable Assembly	Order K439
Internal Contactor Kit (For K428 or K446 Models above codes 9200 Only)	Order K443-2
Δ Ω 42V Remote Output Control Module	Order K624-1
Remote Control Cable Assemblies	Order K625, K626, K627
+ Pulse Power Adapter Kit	Order K460-1
Pulse Power Cable Assembly	Order K461
◇ Remote Voltage Control Kit (with Terminal Strip)	Order K444
◇ Remote Voltage Control Kit (with 6 Pin Amphenol Connector)	Order K444-1
◇ Remote Voltage Control Kit (with 14 Pin Amphenol Connector)	Order K444-2
Spindle Adapter for 14 lb Coils	Order K435
Spindle Adapter for 8" O.D. Spools	Order K468
Jumper Plug Kit	Order K484
Rear Handle Kit (Codes 9383 and above)	Order K577-1
Readi-Reel Adapter	Order K363-P
<p>* See S.O. for Length</p> <p>+ For K428 or K446 Models: Requires K461. Cannot be used with K431-1, k443-2, or K444 Options Installed.</p> <p>◇ Not required if using K431-1 or K460-1.</p> <p>Δ Requires K625- [], K626- [], or k627- [] Power Input Cable Assembly.</p> <p>Ω Cannot be used with k439 or K443-2 Contactor Kit></p>	



Indicates a change this printing.

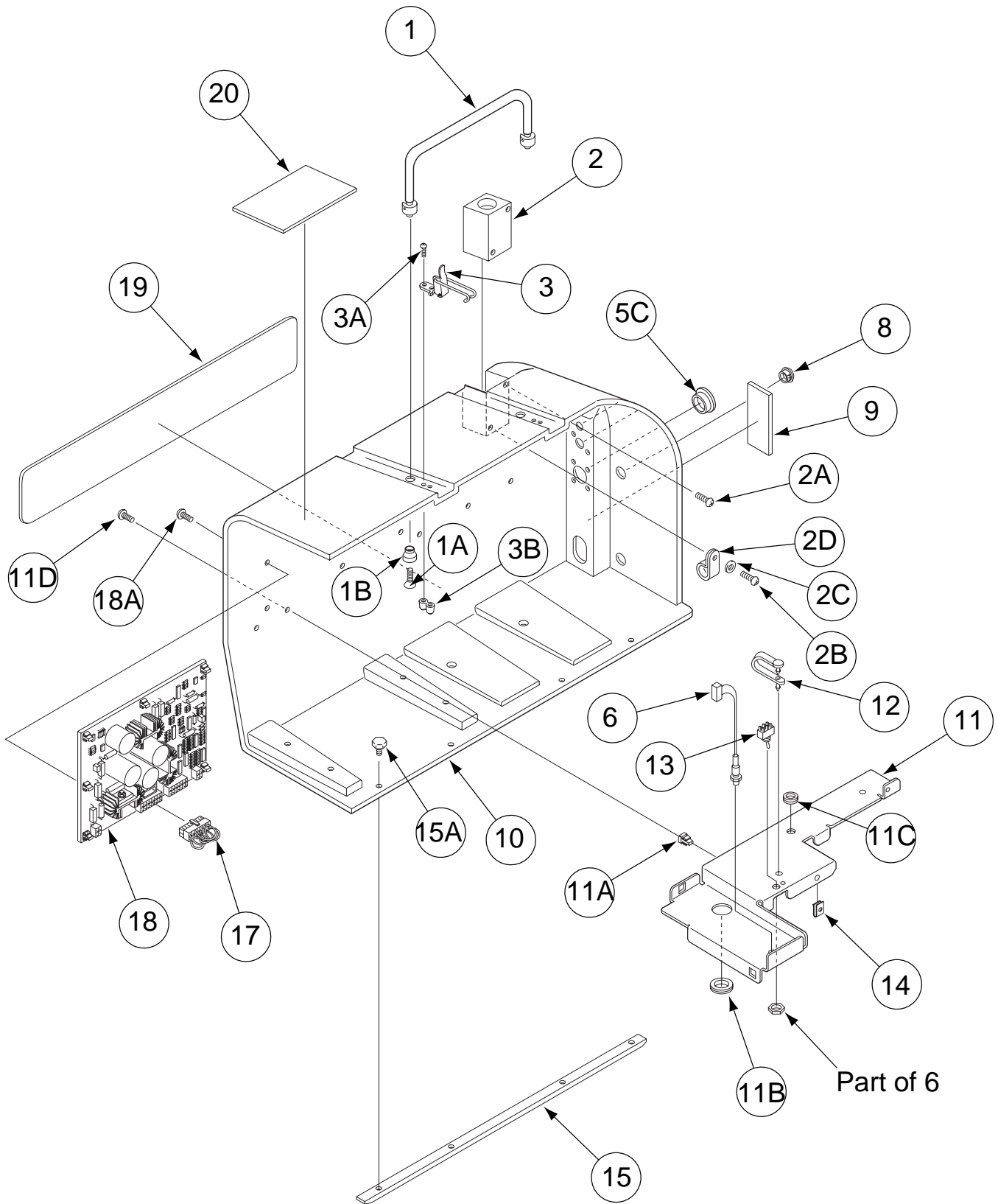
Use only the parts marked "x" in the column under the heading number called for in the model index page.

Recommended Spare Part are Highlighted Bold

DESCRIPTION	PART NO.	QTY.	1	2	3	4	5	6	7	8	9
Miscellaneous Leads & Sleeving (K433)	S18171	1	X								
ESD Snubber Assembly (Code 10556)	S22937	1	X								
Wiring Diagram	L10925	1	X								
Strain Relief Clamp	S24287	1	X								
Strain Relief Bracket	S24288	1	X								



Case Assembly



Indicates a change this printing.

Use only the parts marked "x" in the column under the heading number called for in the model index page.

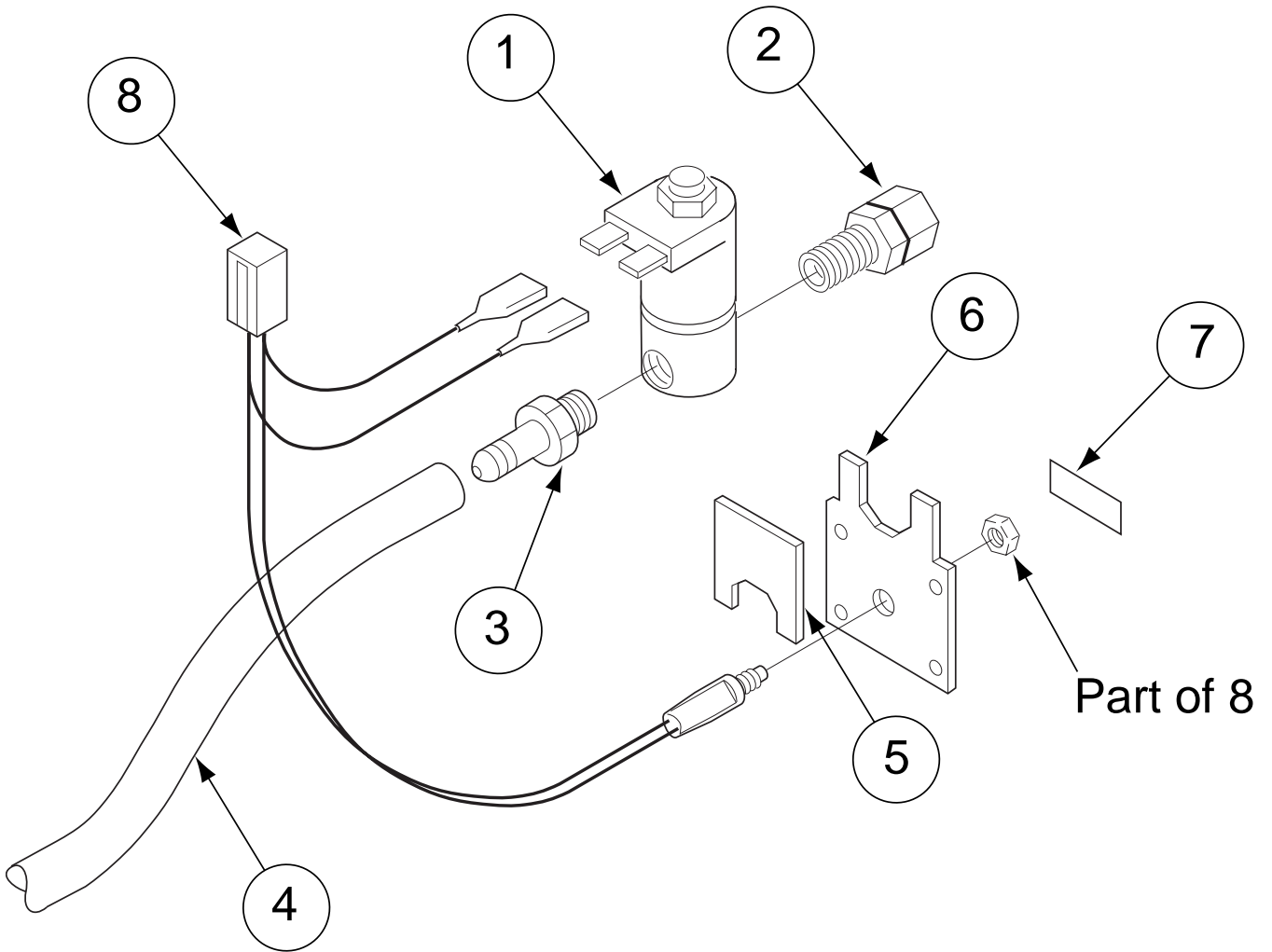
Recommended Spare Parts are Highlighted in Bold

ITEM	DESCRIPTION	PART NO.	QTY.	1	2	3	4	5	6	7	8	9
1	Handle Assembly	S18170	1	X								
1A	Flat Head Screw	CF000321	2	X								
1B	Handle Insulator	T15104	2	X								
2	Gun Holder	M15469	1	X								
2A	Self Tapping Screw	S8025-62	1	X								
2B	Self Tapping Screw	S8025-82	1	X								
2C	Plain Washer	S9262-3	1	X								
2D	Lead Clamp	T12563-7	1	X								
3	Door Latch	S18137	2	X								
3A	Self Tapping Screw	S8025-62	4	X								
3B	Insulated Latch Nut	T15090	2	X								
5C	Plug Button	T10397-20	1	X								
6	Cold Inch Switch Assembly	S18250-589	1	X								
8	Plug Button	T10397-3	2	X								
9	Caution Decal	T13086-77	1	X								
10	Case	G2342-2	1	X								
11	Box Panel	L10927	1	X								
11A	Support Nut	S14020-6	4	X								
11B	Bushing	T12380-4	1	X								
11C	Bushing	T12380-2	1	X								
11D	Self Tapping Screw	S8025-98	4	X								
12	Cable Hanger	T13496-2	1	X								
13	Toggle Switch	T13381-6	1	X								
14	#10-24 Speed Nut	T11525-1	1	X								
15	Skid	S20195	2	X								
15A	Insulated Fastener	T15088	8	X								
17	Jumper Plug	T13498-21	1	X								
18	Control P.C. Board Assembly	G3425- []	1	X								
18A	Self Tapping Screw	S8025-97	8	X								
19	Logo decal	S24882	1	X								
20	Warning Decal	S20601	1	X								

Note: When ordering new printed circuit boards indicate the dash number [] of the "Old" board that is to be replaced. This will aid Lincoln in supplying the correct and latest board along with any necessary jumpers or adapters. The dash number brackets [] have purposely been left blank so as to eliminate errors, confusion and updates.



K-430-2 Gas Solenoid Kit



Indicates a change this printing.

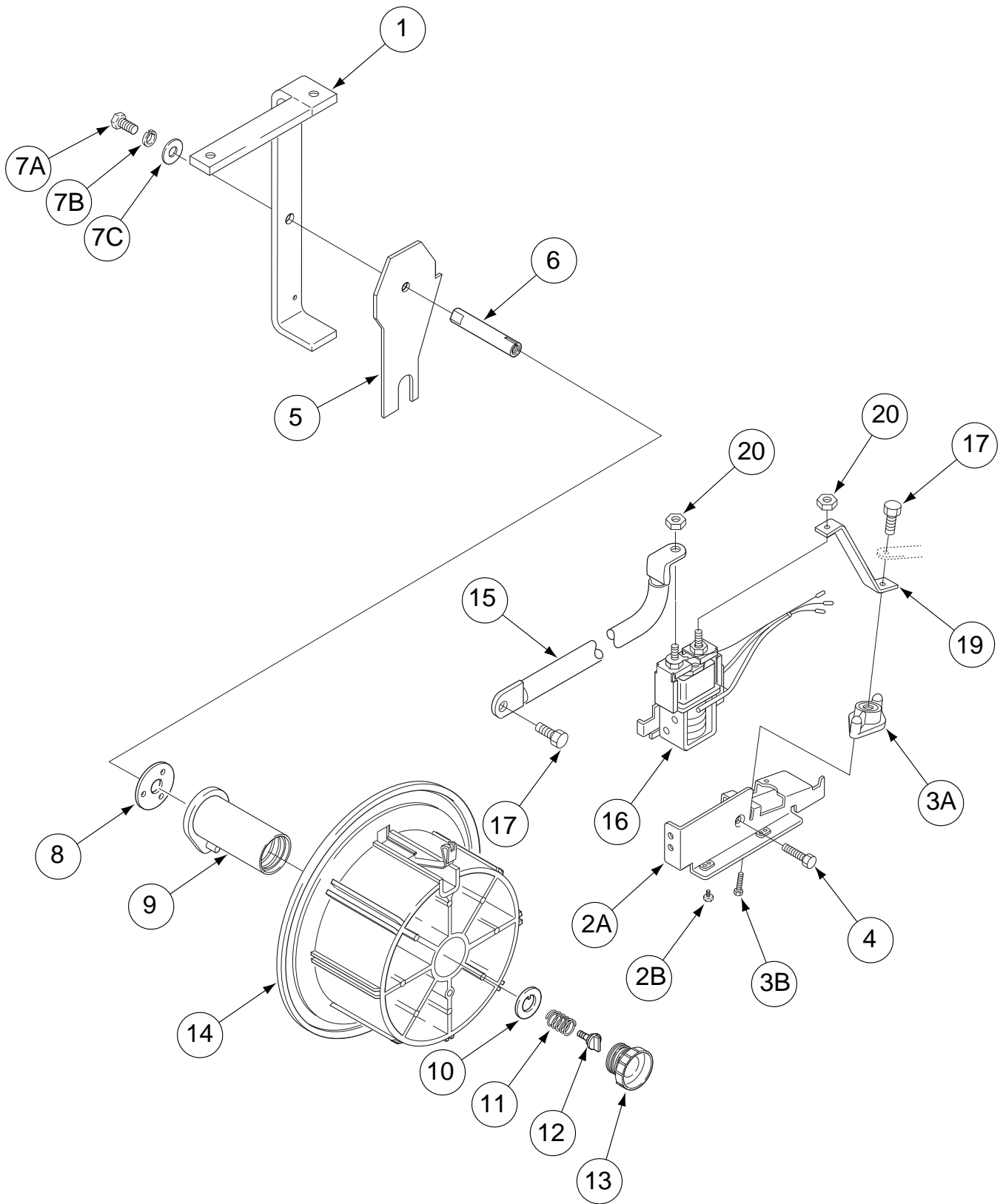
Use only the parts marked "x" in the column under the heading number called for in the model index page.

Recommended Spare Parts are Highlighted in Bold

ITEM	DESCRIPTION	PART NO.	QTY.	1	2	3	4	5	6	7	8	9
	Gas Solenoid & Support Assembly	M19153	1	X								
1	Solenoid Valve Assembly	S18262	1	X								
2	Female Connector	T11591-5	1	X								
3	Hose Nipple (Male)	T14557-4	1	X								
4	Flex Tubing	T10642-145	1	X								
5	Solenoid Locking Plate	S24283	1	X								
6	Solenoid Support Plate	S24284	1	X								
7	Gas Purge Decal	T13086-154	1	X								
8	Plug & Lead Assembly	S18250-587	1	X								



Reel Stand Assembly



Indicates a change this printing.

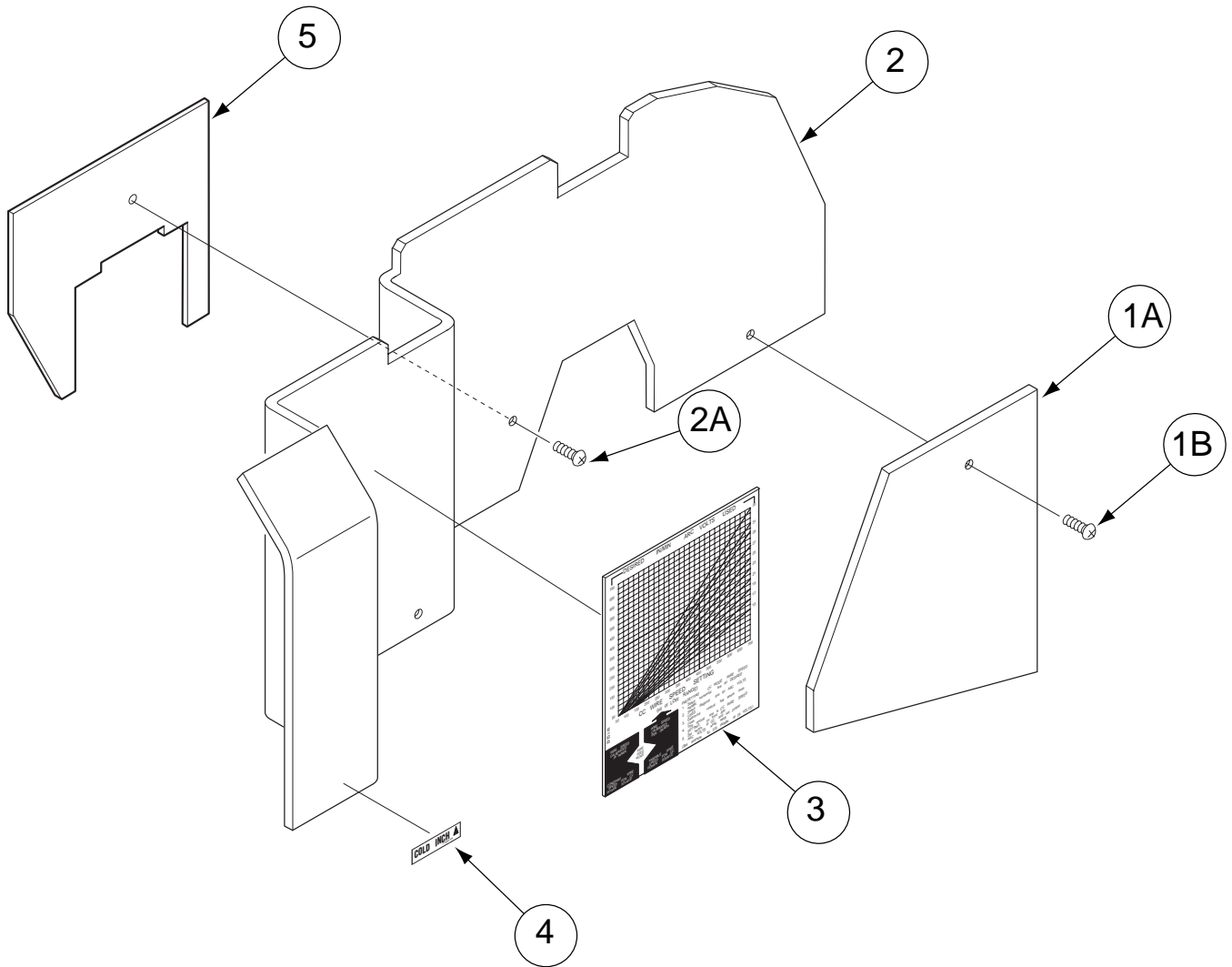
Use only the parts marked "x" in the column under the heading number called for in the model index page.

Recommended Spare Parts are Highlighted in Bold

ITEM	DESCRIPTION	PART NO.	QTY.	1	2	3	4	5	6	7	8	9
1	Reel Stand Assembly	M15201	1	X								
2A	Contacto Bracket	M19156	1	X								
2B	Insulated Fastener	T15088	2	X								
2C	Support Nut (Not Shown)	S14020-1	2	X								
3A	Output Terminal Assembly	T14166-9	1	X								
3B	Thread Forming Screw	S8025-92	2	X								
4	Thread Forming Screw	S9225-46	1	X								
5	Brake Plate	S24286	1	X								
6	Spindle Shaft	S18138	1	X								
7A	1/2-13 x 1.50 Hex Head Cap Screw	CF000052	1	X								
7B	Lock Washer	E106A-15	1	X								
7C	Plain Washer	S9262-14	1	X								
8	Friction Washer	S17435	1	X								
9	Spindle	M14560	1	X								
10	Keyed Washer	T12965	1	X								
11	Spring	T11862-14	1	X								
12	Thumb Screw	T14813-A	1	X								
13	Retaining Collar	M14587-1A	1	X								
14	Readi-Reel Adapter	K363-P	1	X								
15	Cable Assembly	S18404-1	1	X								
16	Contacto Assembly, Includes: Contacto	M17586-1 M15308-1	1 1	X X								
17	#10-32 x .25 Round Head screw	CF000027	2	X								
18	Lock Washer (Not Shown)	E106A-1	2	X								
19	Bus Bar	S24265	1	X								
20	1/2-13 Hex Nut	CF000027	1	X								



Box Cover Assembly



Indicates a change this printing.

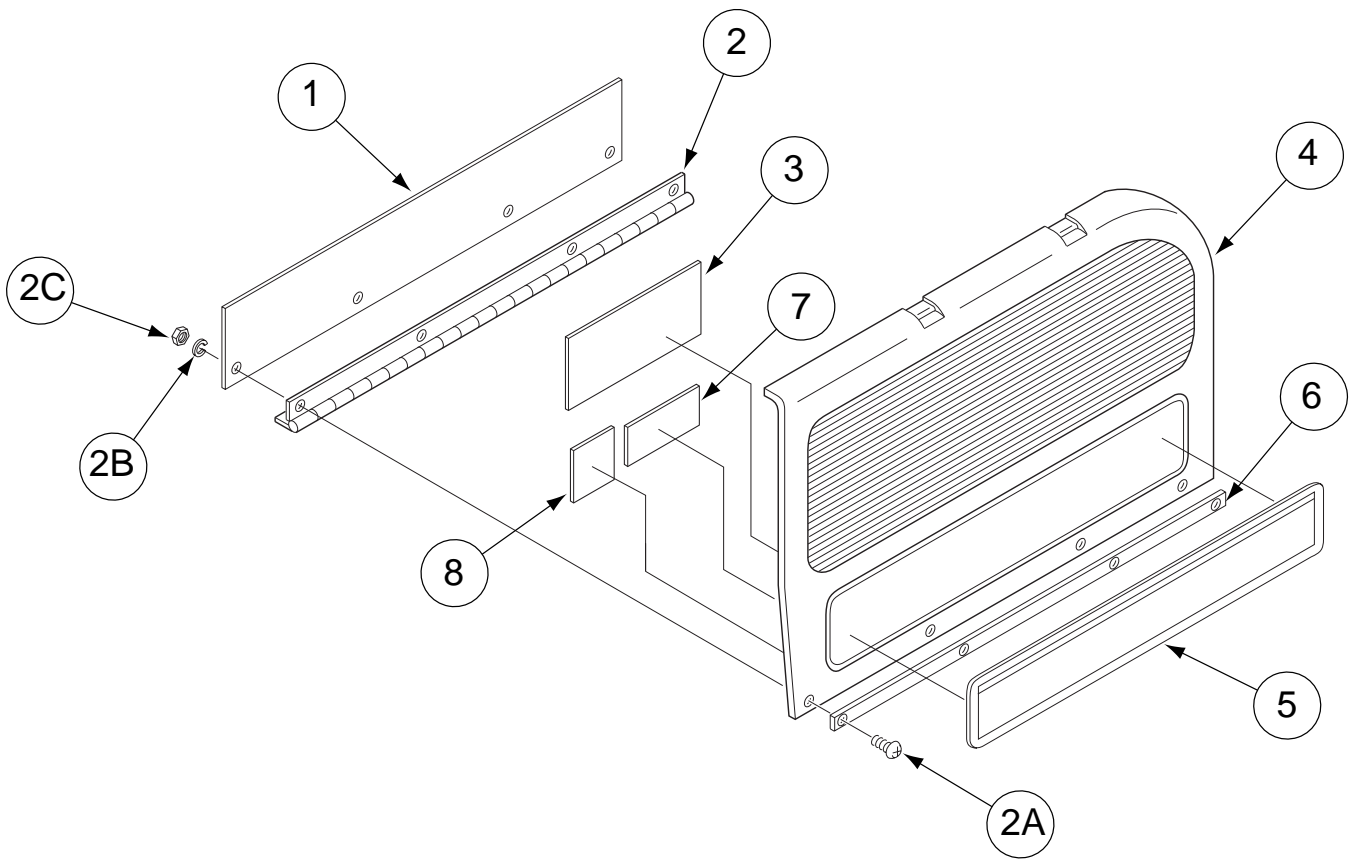
Use only the parts marked "x" in the column under the heading number called for in the model index page.

Recommended Spare Parts are Highlighted in Bold

ITEM	DESCRIPTION	PART NO.	QTY.	1	2	3	4	5	6	7	8	9
1A	Stud Cover	S24289	1	X								
1B	Thread Forming Screw	S9225-30	1	X								
1C	#10-24 Speed nut (Not Shown)	T11525-1	1	X								
2	Box Cover	L7362-1	1	X								
2A	Thread Forming Screw	S9225-30	3	X								
3	CC Mode Decal	M15242	1	X								
4	Cold inch Decal	T13086-99	1	X								
5	Contactoer Cover	S24264	1	X								



Case Door Assembly



Indicates a change this printing.

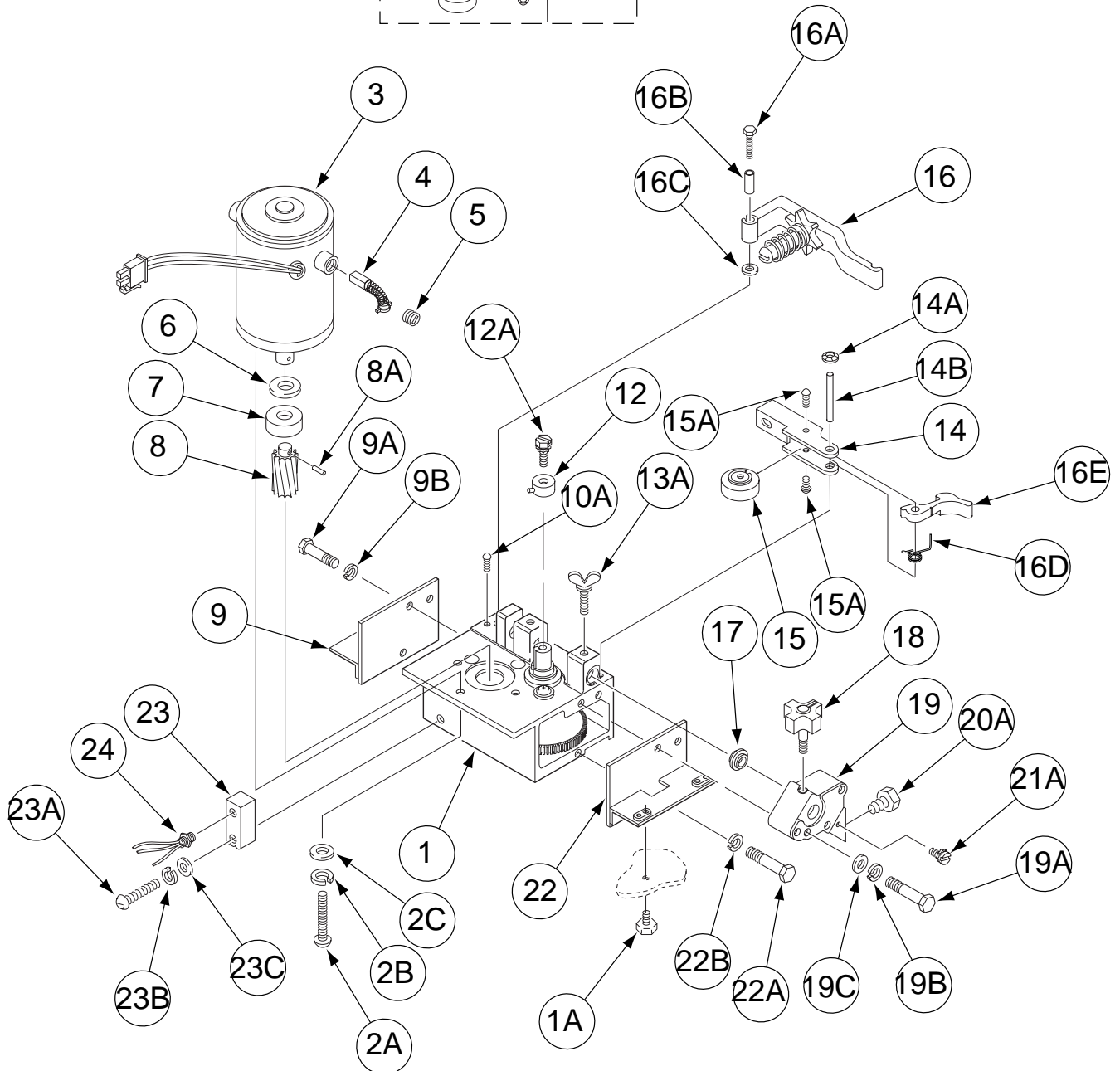
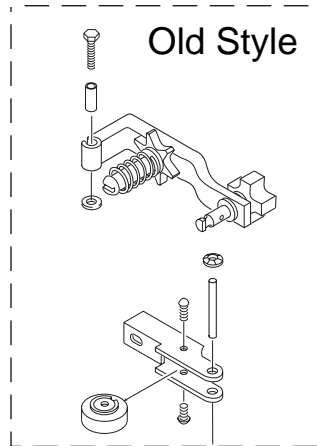
Use only the parts marked "x" in the column under the heading number called for in the model index page.

Recommended Spare Parts are Highlighted in Bold

ITEM	DESCRIPTION	PART NO.	QTY.	1	2	3	4	5	6	7	8	9
	Door & Hinge Assembly, Includes:(Items 1, 2, 4, & 6)	L10926	1	X								
1	Hinge Insulator	S20196	1	X								
2	Hinge	T8755-BT	1	X								
2A	#6-32 Pan Head Screw	CF000337	4	X								
2B	Lock Washer	T9695-2	4	X								
2C	#6-32 Hex Nut	CF000005	4	X								
3	Drive Roll Decal	S22739-1	1	X								
4	Case Door	L7370-1	1	X								
5	Logo Decal	S24882	1	X								
6	Door Hinge Strip	S20197	1	X								
7	Warning Decal	T13470	1	X								
8	Gun Warning Decal	T13297	1	X								



Wire Drive Assembly



Indicates a change this printing.

Use only the parts marked "x" in the column under the heading number called for in the model index page.

Recommended Spare Parts are Highlighted in Bold

ITEM	DESCRIPTION	PART NO.	QTY.	1	2	3	4	5	6	7	8	9
	Wire Drive Assembly Includes items 1, 10A, 13A-14B, & 16-20A)	L7333-3	1	X								
1	Motor & Gearbox Assembly (Includes items 2-2C, 9-9B, & 22-24)	L7332-3	1	X								
1A	Insulated Fastener	T15088	4	X								
2	Drive Motor Assembly, (Includes 3-8A)	M15078-4	1	X								
2A	#10-24 Round head Screw	CF000047	3	X								
2B	Lock Washer	E106A-1	3	X								
2C	Plain Washer	S9262-27	3	X								
3	Drive Motor	Not Sold Separately	1	X								
4	Brush & Spring Assembly	M16718-F	2	X								
5	Brush Cap	M14907-G	2	X								
6	Plain Washer	S9262-70	1	X								
7	Ring Magnet	S18011	1	X								
8	Pinion Gear	S17980-2	1	X								
8A	Roll Pin	T9967-33	1	X								
9	Cover & Flange Assembly	S18119	1	X								
9A	Hex Head Cap Screw	CF000012	2	X								
9B	Lock Washer	E106A-2	2	X								
10A	Drive Screw	S8025-19	1	X								
12	Collar Assembly	S21193	1	X								
12A	Sems Screw	T10082-26	1	X								
13A	Thumb Screw	T15046	2	X								
14	Idle Roll Assembly (Includes 15 & 15A)	S24299	1	X								
14A	Speed Clip	T10982-7	1	X								
14B	Groove Pin	T10580-9	1	X								
15	Bearing & Shaft Assembly	T13244	1	X								
15A	Drive Screw	S8025-19	2	X								
16	Quick Release Assembly	M19266-1	1	X								
16A	Hex Head Cap Screw	CF000069	1	X								
16B	Pivot Spacer	S10918-7	1	X								
16C	Plain Washer	S9262-103	1	X								
16D	Torsion Spring	S24300	1	X								
16E	Latch	S24299	1	X								
17	Locator Bushing	T14031	1	X								
18	Molded Hand Screw	T13858	1	X								
19	Conductor Block	S17798	1	x								
19A	1/4-20 Hex Head Cap Screw	CF000016	2	X								
19B	Lock Washer	E106A-2	2	X								
19C	Plain Washer	S9262-23	2	X								
20A	Hex Head Cap Screw	CF000014	1	X								
21A	#10-24 Sems Screw	T10082-4	1	X								
22	Cover & Flange Assembly	S18118	1	X								
22A	1/4-20 Hex Head Cap Screw	CF000012	1	X								
22B	Lock Washer	E106A-2	1	X								
23	Switch Mounting Housing Assembly	S21227	1	X								
23A	#10-24 Round Head Screw	CF000038	1	X								
23B	Lock Washer	E106A-1	1	X								
23C	Plain Washer	S9262-27	1	X								
24	Hall Effect Switch Assembly	S21419	1	X								

#



Indicates a change this printing.

Use only the parts marked "x" in the column under the heading number called for in the model index page.

Recommended Spare Parts are Highlighted in Bold

ITEM	DESCRIPTION	PART NO.	QTY.	1	2	3	4	5	6	7	8	9
	Wire Size Assembly	Conversion Kit	Drive Roll	No. Req'd	Outgoing Guide Tube	Outgoing Guide Insert L (Loose)	Middle Guide	Incoming Guide Tub				
.030S	KP655-030S†	M17301-030	2	S14352-035	S14349-045 & S14349-045L	M16447-035	T13467-035F					
.035S	KP655-035S†	M17301-035	2	S14352-035	S14349-045 & S14349-045L	M16447-035	T13467-052					
.035C	KP655-035C	M17302-035	4	S14352-035	S14349-045 & S14349-045L	M16447-035	T13467-052F					
.023/.025S	KP655-025S†	M17301-025	2	S14352-035	S14349-045 & S14349-045L	M16447-035	T13467-035F					
.068,5/64,3/32 7/64F	KP655-3/32	M17302-3/32	4	S14352-3/32	S14349-7/64 & S14349-7/64L	M16447-3/32	T13467-					
.052S	KP655-052S†	M17301-052	2	S18033-052	S14349-052 & S14349-052L	M16447-052	T13467-052F					
.052C	KP655-052C	M17302-052	4	S18033-052	S14349-052 & S14349-052L	M16447-052	T13467-052F					
1/16 1/16F	KP655-1/16	M17302-1/16	4	S14352-1/16	S14349-1/16 & S14349-1/16L	M16447-1/16	T13467-					
1/16A 1/16F	KP656-1/16A	M17303-1/16A†	2	S14352-1/16	S14349-1/16	M16447-1/16	T13467-					
3/64A	KP656-3/64A	M17303-3/64A†	2	S18033-052	S14349-045	M16447-052	T13467-052F					
.035A	KP656-035A	M17303-035A†	2	S14352-035	S14349-045	M16447-035	T13467-035F					

†Includes T14984 Spacer for older versions of the LN-7.



NOTES

LN-25



Indicates a change this printing.

Use only the parts marked "x" in the column under the heading number called for in the model index page.

Recommended Spare Parts are Highlighted in Bold

ITEM	DESCRIPTION	PART NO.	QTY.	1	2	3	4	5	6	7	8	9
1	Case Front Panel	L7366-1	1	X								
1A	Self Tapping Screw	S8025-98	1	X								
	Contactors P.C. Board Assembly, Includes (Items 2 & 3-3B)	S21415-[]	1	X								
2	Bracket	S18406	2	X								
2A	Self Tapping Screw	S8025-98	4	X								
3	Contactors P.C. Board	L10863-[]	1	X								
3A	Self Tapping Screw	S8025-71	4	X								
3B	Plastic Expansion Nut	S14020-3	4	X								
5	Cable Tie Mount	T13941	1	X								
6	Toggle Switch	T13381-6	1	X								
7	Potentiometer	T10812-92	1	X								
8	Drive Screw	S8025-8	2	X								
9	Polarity Switch Shield	S19736	1	X								
10	Toggle Switch	T10800-7	1	X								
15	Trigger Connector	S13100-174	1	X								
15A	Self Tapping Screw	S8025-73	4	X								
16	Warranty Decal	S22127-1	1	X								
17	Bulkhead Connector Assembly	T15153	1	X								
17A	Self Tapping Screw	S8025-4	2	X								
19	Nameplate	M19616	1	X								
19A	Thread Forming Screw	S9225-61	3	X								
20	Voltmeter	M10486-10	1	X								
21	Ground Lead Assembly, Includes:	S17211-1	1	X								
	Ground Clamp	M16964	1	X								
21A	Grommet	T9274-5	1	X								
22	Plug Button	T10397-19	3	X								
23	Control Knob	S18425-1	1	X								

Note: When ordering new printed circuit boards indicate the dash number [] of the "Old" board that is to be replaced. This will aid Lincoln in supplying the correct and latest board along with any necessary jumpers or adapters. The dash number brackets [] have purposely been left blank so as to eliminate errors, confusion and updates.



Indicates a change this printing.

Use only the parts marked "x" in the column under the heading number called for in the model index page.

Recommended Spare Parts are Highlighted in Bold

ITEM	DESCRIPTION	PART NO.	QTY.	1	2	3	4	5	6	7	8	9
	Remote P.C. Board with Brackets, Includes:	S21414	1	X								
	P.C. Board	M16295-[]	1	X								
	Self Tapping Screw	S8025-98	4	X								
	Remote Connector Assembly, Includes:	M17588	1	X								
	Potentiometer	T10812-40	1	X								
	Connector (6 Pin)	S12021-36	1	X								
	Plug Housing	S18249-4	1	X								
	Insulating Washer	S10773-75	1	X								
	Potentiometer Insulation	S18396	1	X								
	Self Tapping Screw	S8025-73	4	X								
	Knob	S18139-2	1	X								
	Lead Clamp	T12563-7	1	X								
	Self Tapping Screw	S8025-82	1	X								
	Plain Washer	S9262-3	1	X								
	Plug & Lead Assembly (Blue)	S18250-316	1	X								
	Plug & Lead Assembly (Red)	S14165-446	1	X								
	Plug & Lead Assembly (White)	S18250-323	1	X								
	Jumper Plug	T13498-22	1	X								

Note: When ordering new printed circuit boards indicate the dash number [] of the "Old" board that is to be replaced. This will aid Lincoln in supplying the correct and latest board along with any necessary jumpers or adapters. The dash number brackets [] have purposely been left blank so as to eliminate errors, confusion and updates.



Indicates a change this printing.

Use only the parts marked "x" in the column under the heading number called for in the model index page.

Recommended Spare Parts are Highlighted in Bold

ITEM	DESCRIPTION	PART NO.	QTY.	1	2	3	4	5	6	7	8	9
	Remote Control P.C. Board with Standoffs, Includes:	S20967	1	X								
	Remote Control P.C. Board Assembly	L9244-[]	1	X								
	P.C. Board Mounting Bracket	S18406	2	X								
	Plastic Expansion Nut	S10420-4	4	X								
	Self Tapping Screw	S8025-14	4	X								
	Potentiometer & Connector Assembly, Includes:	M17251	1	X								
	Potentiometer	T10812-40	1	X								
	Receptacle	S18249-8	1	X								
	Insulating Washer	S10773-75	1	X								
	Potentiometer Insulation	S18396	1	X								
	Receptacle & Lead assembly	S14165-446	1	X								
	Plug & Lead Assembly	S18250-316	1	X								
	Plug & Lead Assembly	S18250-323	1	X								
	Control Knob	S18139-2	1	X								
	Self Tapping Screw, #8 1/2" Long	S8025-98	4	X								
	Self Tapping Screw, #6 3/8" Long	S8025-73	1	X								
	Self Tapping Screw, #6 3/4" Long	S8025-82	1	X								
	Lead Clamp	T12563-7	1	X								
	Plain Washer	S9262-3	1	X								

Note: When ordering new printed circuit boards indicate the dash number [] of the "Old" board that is to be replaced. This will aid Lincoln in supplying the correct and latest board along with any necessary jumpers or adapters. The dash number brackets [] have purposely been left blank so as to eliminate errors, confusion and updates.



Indicates a change this printing.

Use only the parts marked "x" in the column under the heading number called for in the model index page.

Recommended Spare Parts are Highlighted in Bold

ITEM	DESCRIPTION	PART NO.	QTY.	1	2	3	4	5	6	7	8	9
	Remote Cable Assembly, Includes:	K432 -										
	Polarized Socket Connector	(Specify Length) S12020-28	1	X								
	Polarized Pin Connector	S12020-27	1	X								
	Connector to Cable Clamp	S12024-1	2	X								



Indicates a change this printing.

Use only the parts marked "x" in the column under the heading number called for in the model index page.

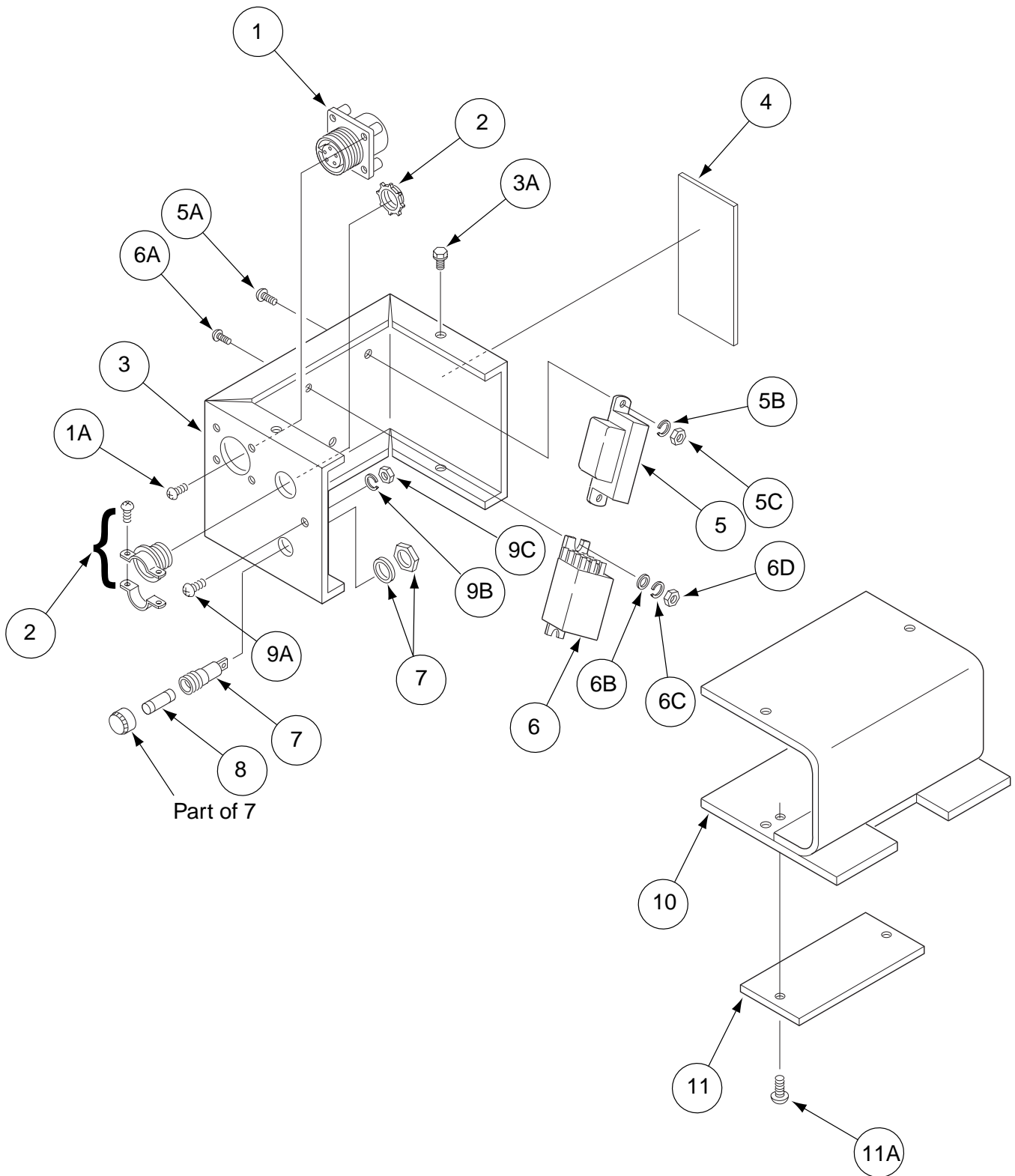
Recommended Spare Parts are Highlighted in Bold

ITEM	DESCRIPTION	PART NO.	QTY.	1	2	3	4	5	6	7	8	9
	Remote Cable Extension, Includes:	K439										
	Polarized Connector	S12023-12	1	X								
	Polarized Pin Connector	S12020-27	1	X								
	Connector to Cable Clamp	S12024-1	2	X								

#



K433 Power Source Remote Box



Indicates a change this printing.

Use only the parts marked "x" in the column under the heading number called for in the model index page.

Recommended Spare Parts are Highlighted in Bold

ITEM	DESCRIPTION	PART NO.	QTY.	1	2	3	4	5	6	7	8	9
1	Connector	S12021-32	1	X								
1A	Self Tapping Screw	S8025-73	4	x								
2	Box Connector	T9639-2	1	X								
3	Control Box Case	L7340	1	X								
3A	Self Tapping Screw	S8025-70	4	X								
4	Warning Decal	T13470	1	x								
5	Transformer Assembly	S18128	1	X								
5A	Round Head Screw	CF000006	2	X								
5B	Lock Washer	T4291-A	2	X								
5C	#8-32 Hex Nut	CF000042	2	X								
6	Relay	S14293-6	1	X								
6A	Round Head Screw	Cf000003	2	X								
6B	Plain Washer	S9262-3	2	X								
6C	Lock Washer	E106A-13	2	X								
6D	#6-32 Hex Nut	CF000005	2	X								
7	Fuse Holder	S10433-1	1	X								
8	Slow Blow Fuse	T10728-11	1	X								
9A	Thread Forming Screw	S9225-30	1	X								
9B	Lock Washer	T9695-1	1	X								
9C	#10-24 Hex Nut	CF000010	2	X								
10	Control Box Base	S18130	1	X								
11	Nameplate	S16622-C	1	X								
11A	Self Tapping Screw	S8025-80	2	X								



NOTES

LN-25



Indicates a change this printing.

Use only the parts marked "x" in the column under the heading number called for in the model index page.

Recommended Spare Parts are Highlighted in Bold

ITEM	DESCRIPTION	PART NO.	QTY.	1	2	3	4	5	6	7	8	9
	Contactor Assembly	M17586-1	1	X								
	Cable Assembly (Contactor to Gear Box brass Block)	S18404-1	1	X								
	Cold Inch Switch Assembly	S18250-589	1	X								
	Decal (Caution)	T13086-77	1	X								
	Decal (Cold Inch)	T13086-99	1	X								
	Contactor P.C. Board with Standoffs	S21415-1	1	X								
	Self Tapping Screws (Mounts P.C. Board to Case Front)	S8025-98	4	X								
	Installation Instructions	L10923	1	X								
	Handling Instructions	T14477	1	X								
	Plug & Lead Assembly	S18250-368	1	X								
	Plug & Lead Assembly	S18250-323	1	X								
	Contactor Cover	S24264	1	X								
	Bus Bar	S24265	1	X								
	E1159/B-.625-4.75 Sleeving	CS000102	1	X								
	Wiring Diagram	M19155	1	X								
	#10-32 x .25 Round Head Screw	CF000325	2	X								
	Lock Washer	E106A-1	2	X								



NOTES

LN-25

